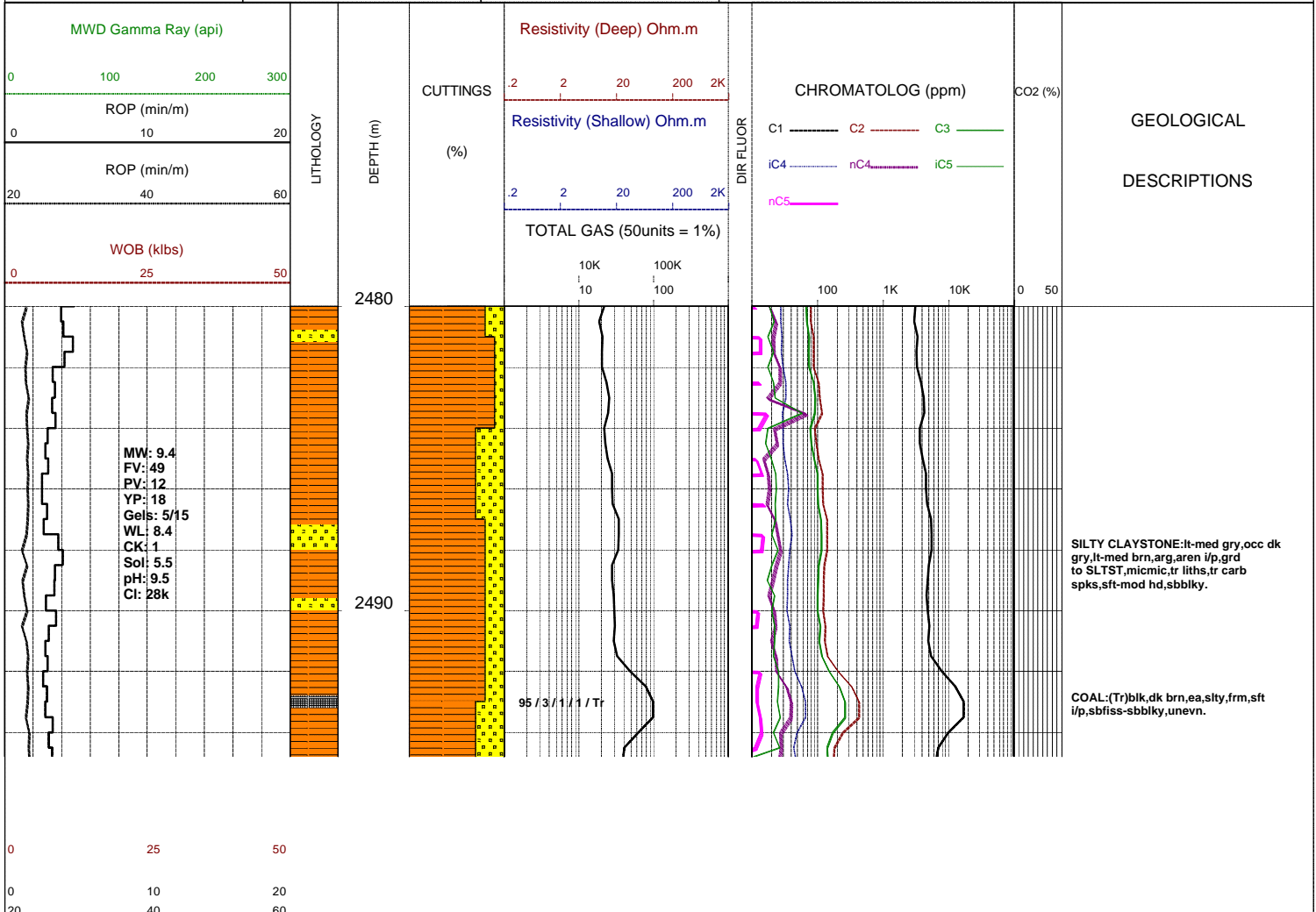
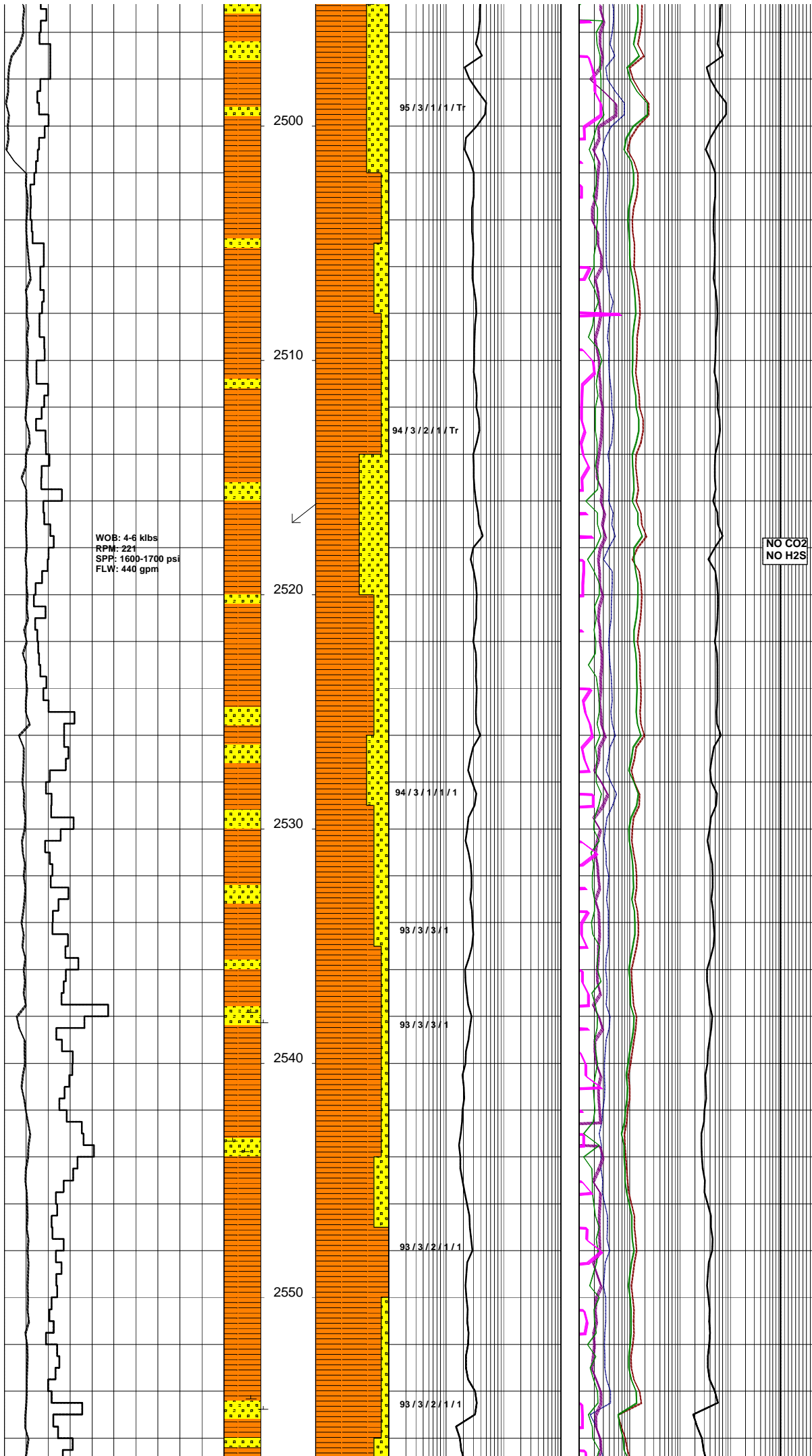


# GLENAIRE 1

Field :	Kelly Bushing : PEP 160	Rig : ENSIGN 32	Open Hole:	Cased Hole:	Loggers : J.SUTTON
Block:	Ground Level : STATUS	Spud Date : 08/09/2006	17.5" (12.25") 307m	13.375" (9.625") 303.5m	N.LUIS
State : VICTORIA	GRS80 Ellipsoid MGA94 Zone54 :	TD Date : XX/XX/2006	12.25" (8.5") 1255m	9.625" (7.0") 1252m	J.TRETHEWEY
Country : AUSTRALIA	Lat. : 37°34'47.03S	Total Depth : VVV	8.5" XXXXm		
Scale : 1/ 200	Long. : 140°59'52.25E	Final Status : WWW		RRRR SSSS AAA	

<b>LITHOLOGY</b> Conglomerate Coarse Sandstone Med Sandstone Calcareous Sst Silty Sandstone Siltstone Carb. Siltstone Calc. Siltstone Clay Limestone Dolomite Coal Anhydrite Gypsum Igneous Volcanic Metamorphic Cement	<b>ACCESSORIES</b> Pyrite Siderite Glauconite Feldspar Mica Ferrous Chert Calcareous Dolomitic Carbonaceous Lithoclast Breccia Foraminifera Corals Inoceramus Bryozoa Plant remains Fossils	<b>DRILLING DATA</b> Casing Shoe Bit Trip Wiper Trip Core DST Deviation Survey  <b>MUD DATA</b> MW - Mud Weight (lb/gal) FV - Funnel Viscosity (s/qt) PV - Plastic Viscosity (cps) YP - Yield Point (lb/100ftsq) Gel - Gel Strength (10sec) WL - Water Loss (cc/30min) pH - Acidity / Alkalinity Ck - Cake (32nd/inch) O/W/S - Oil / Water / Solids Cl - Chlorides (mg/L) K+ - Potassium (mg/L) Rmf - Res. Mud Filtrate (ohmm)	<b>ABBREVIATIONS</b> BOPD - Barrels of Oil Per Day BWPD - Barrels of Water Per Day CG - Connection Gas CO - Circulate Out COND - Condensate c/c - Crush Cut DST - Drill Stem Test FLOW - Flow Rate (gal/min) GCM - Gas Cut Mud GCW - Gas Cut Water GTS - Gas To Surface INJ - Injection of Mist (bbls/hr) LCM - Lost Circulation Material MMCFD - Million Cubic Feet / Day NGTS - No Gas To Surface NOTS - No Oil To Surface NFTS - No Flow To Surface OCM - Oil Cut Mud OG - Over Gauge OH - Open Hole OTS - Oil To Surface Q - Flow Rate REC - Recovery FLUOR - Fluorescence ROP - Rate Of Penetration RPM - Revolutions Per Minute RTSTM - Rate Too Small To Measure Rw - Resistivity water r/r - Ring Residue SCFM - Standard Cubic Ft/Min (air) SGCM - Slightly Gas Cut Mud SPM - Strokes Per Minute SPP - Stand Pipe Pressure SWC - Side-Wall Core TG - Trip Gas WOB - Weight On Bit
---	---	--	--



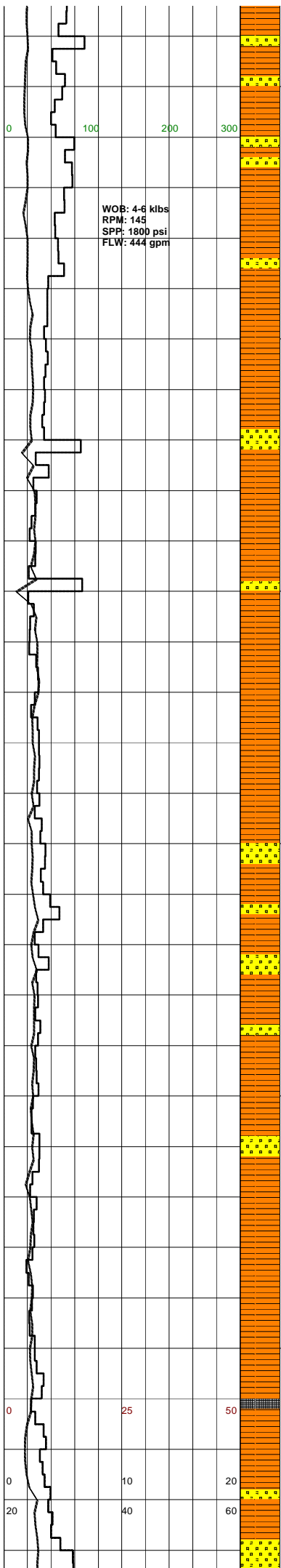


SILTY CLAYSTONE:lt-med gry,occ dk gry,lt-med brn,arg,aren i/p, grd to SLTST,micmic,tr liths,tr carb spks,sft-mod hd,sbbiky.

SANDSTONE:wh,off wh,lt gry,vf-f, occ med,pr-md srt,wk calc cmt, occ sil cmt,abdt off wh arg mtx, abdt blk, brn feld,mod hd,pr vis por,no flour.

SILT CLAYSTONE:lt-med gry,dk gry, grn/gry,lt brn,arg,aren i/p,grd to SLST,micmic,tr liths,tr carb spks,sbbiky.

SANDSTONE:wh,off wh,lt-med gry, f-med,mod srt,sbang-sbrnd,wk calc cmt,occ sil cmt,abdt arg



WOB: 4-6 kibs  
 RPM: 145  
 SPP: 1800 psi  
 FLW: 444 gpm

2560  
 2570  
 2580  
 2590  
 2600  
 2610

93/3/2/1/1  
 10K 100K  
 10 100  
 93/3/2/1/1  
 93/3/3/1/TR  
 93/3/2/1/1  
 93/3/3/1/TR

NO CO2  
 NO H2S

NO CO2  
 NO H2S

care of logs on internet.org  
 mtx.com feld.com blk.brn.gry  
 liths.mod.hc.occ.hd.pr.vis.por,  
 no fluor.

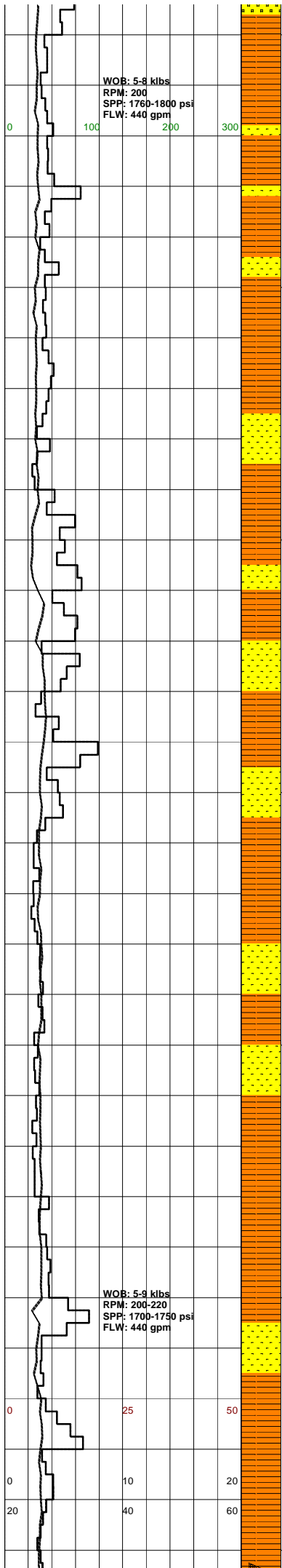
SILTY CLAYSTONE:lt-med gry,grn/gry,  
 lt-dk brn,occ dk gry,arg,aren i/p,  
 micmic,tr liths,tr carb spks,sft-  
 mod hd,occ hd,sbbkly.

SANDSTONE:wh,off wh,lt gry,f-med,  
 mod srt,sbang-sbrnd,calc cmt,occ  
 sil cmt,abdt arg mtx,occ mtx supp  
 com feld,com blk,brn,gry,grn lith  
 tr carb spks,mod-occ hd,pr vis por  
 no fluor.

SILTY CLAYSTONE:lt-med gry,  
 occ dk,gry,grn-gry,lt brn,aren  
 i/p,grd to SLST,micmic,tr liths  
 tr carb spks,sft-mod hd,occ hd,  
 sbbkly.

COAL:blk,dk brn,dll,sbvit,occ  
 arg,sft-brit,sbbkly,unev.

WOB: 5-8 kibs  
RPM: 200  
SPP: 1760-1800 psi  
FLW: 440 gpm



SANDSTONE:pl gry,off wh,vf-f,wi srt,sbrnd-sbang,mnr mod strg sil cmt,com off wh arg mtx,tr dk brn liths,mod hd-hd,pr vis por,no fluor.

SURVEY @ 2633m: 6.5° 332°T

SILTY CLAYSTONE:med gry,med-dk gry/brn,tr dk gry,mnr aren,occ grd to SLTST.tr micmic & off wh liths, mod hd,sbbiky,occ blkly.

SANDSTONE:pl gry,off wh,vf-f,mod wl srt,sbrnd,com mod strg calc cmt & off wh arg mtx,tr lt brn liths,mod hd,occ fri,pr vis por,no fluor.

SANDSTONE:pl gry,off wh,vf-f, mod wl srt,sbrnd-sbang,mnr mod strg sil cmt,com off wh arg mtx,tr lt brn liths & carb spks,frm-mod hd, sbbiky.

NO CO2  
NO H2S

SILTY CLAYSTONE:lt-med gry, mnr brn/gry,pl gm/gry/lp,aren,occ grd to SLTST,mnr micmic,tr lt brn liths & carb spks,frm-mod hd, sbbiky.

92/3/3/2/T

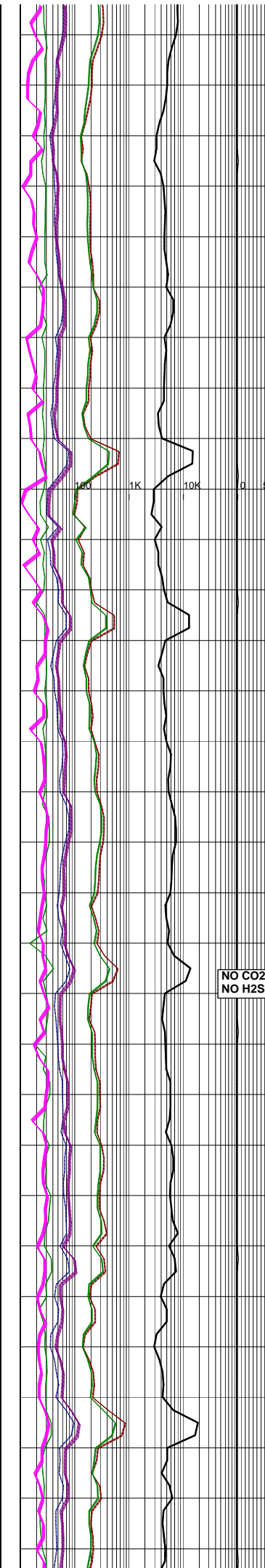
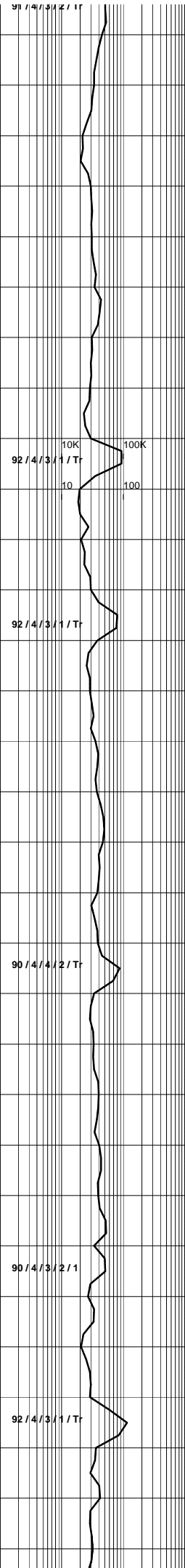
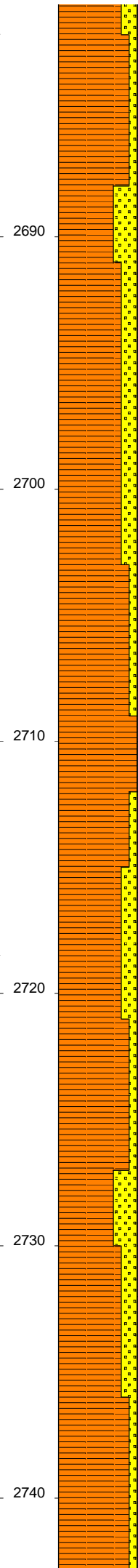
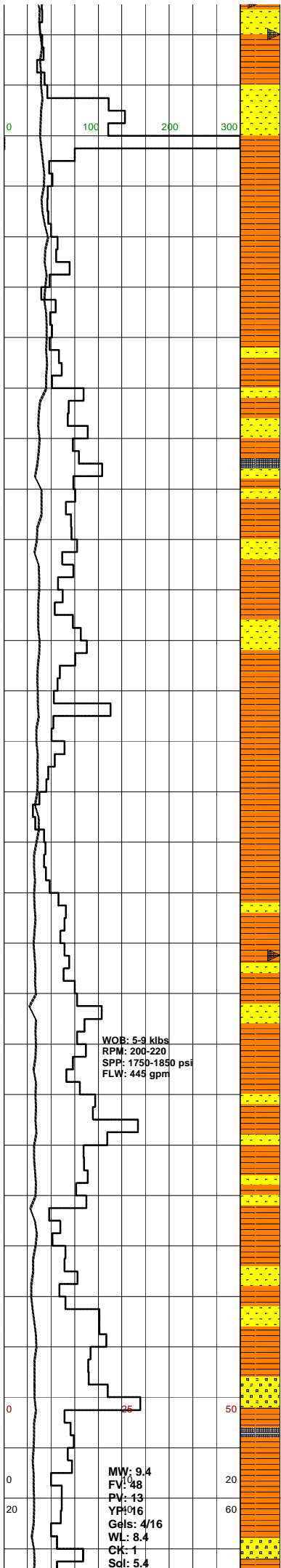
92/3/3/2/T

98/3/2/2/T

89/5/3/2/1

10K 100K  
10 100

100 1K 10K 0 50



SANDSTONE: off wh, mnr pl gry, vf-f, wl srt, sbrnd-sbang, mnr mod strg calc & sil cmt, com off wh arg mtx, tr lt brn liths, fri-mod hd, pr vis por, no fluor.

COAL: (Tr) blk, dk brn, ea, sbvit i/p, slty, sft, occ brit, sbfiss, hckly.

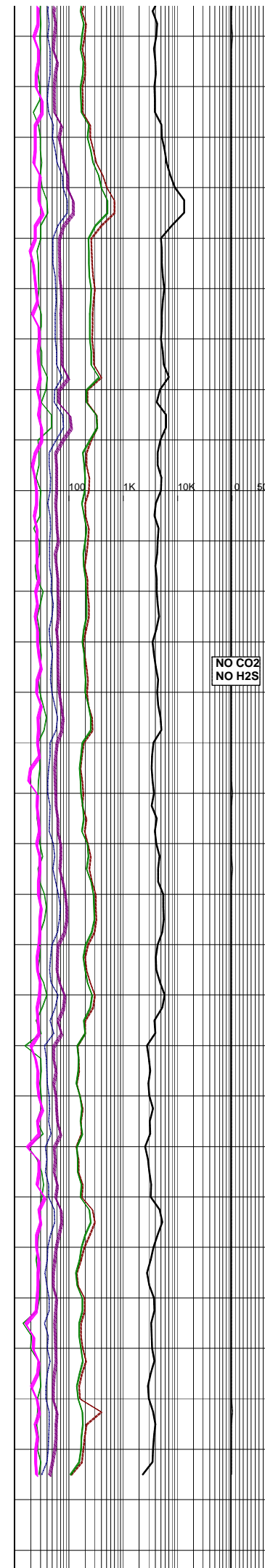
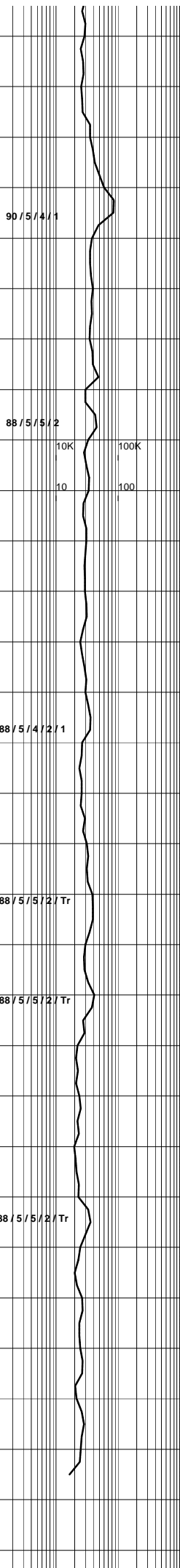
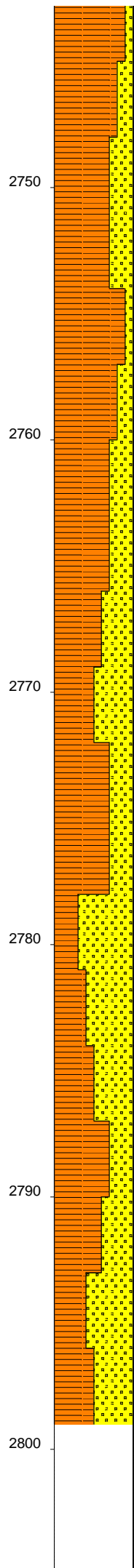
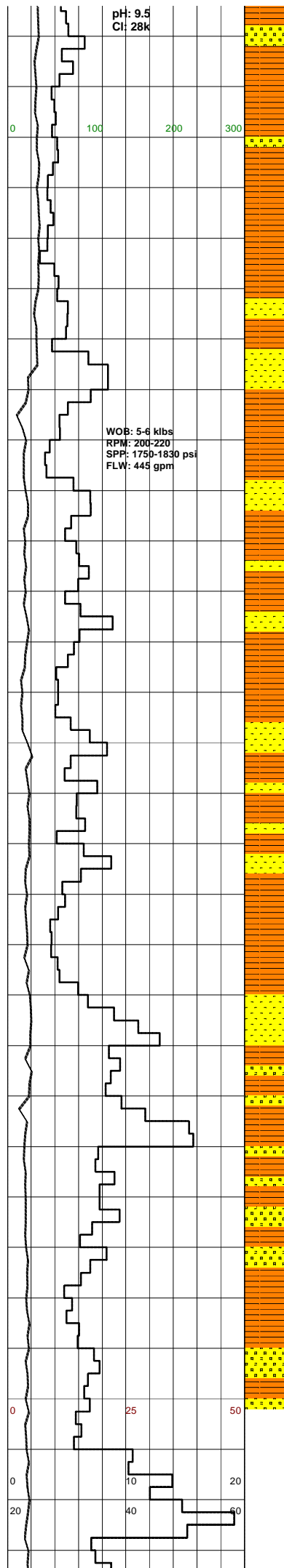
SILTY CLAYSTONE: lt-med gry, med gry/brn, mnr dk gry, aren i/p, occ com lt brn liths, mnr micmic, mod hd, sbbkly.

SANDSTONE: off wh, lt gry/brn, vf-f, mod srt, sbang, occ sbrnd, mod strg, sil cmt, off calc cmt, abdt arg mtx, tr carb spks & liths, mod hd, no vis por, pr inf por, no fluor.

SILTY CLAYSTONE: dk gry occ lt gry, arg, micmic, mnr carb spks, mnr lt brn liths, frm occ mod hd, sbbkly occ sbfiss.

NO CO2  
NO H2S

SANDSTONE: off wh, lt gry, vf-f, mod srt, sbang, occ sbrnd, mod strg sil cmt, off wh occ wh arg mtx, hd occ mod hd, no vis por, pr inf por, no flour.



SILTY CLAYSTONE: med gry/dm, it-med gry, occ dk gry, aren i/p, com grd to SLTST, mnr micmic, tr lt brn & off wh liths & carb spks, mod hd-frm, sbbly-sbflss.

SANDSTONE: off wh, lt gry, vf-f, mod srt, sbang, mod strg sil cmt, wh arg mtx, occ carb spks, tr brn lith, hd mod hd i/p, no vis por, pr inf por, no flour.

SILTY CLAYSTONE: lt gry, occ dk gry, arg, aren grd SLTST i/p, occ micmic, mnr carb spks, tr lt brn liths, mod hd, hd i/p, sbbly.

SANDSTONE: wh, occ off wh, lt gry i/p, vf-f, mod srt, sbang, occ sbrnd, mod strg sil cmt, wk calc cmt, off wh arg mtx, lt gry arg mtx i/p, tr carb spks, occ lt brn liths, tr grn liths, mod hd, no vis por, pr inf por, no flour.

NO CO2  
NO H2S

SILTY CLAYSTONE: dk gry, pl gry/grn i/p, arg, com micmic, mnr grn liths, mnr carb spks, mnr brn liths, mod hd, sbbly.

